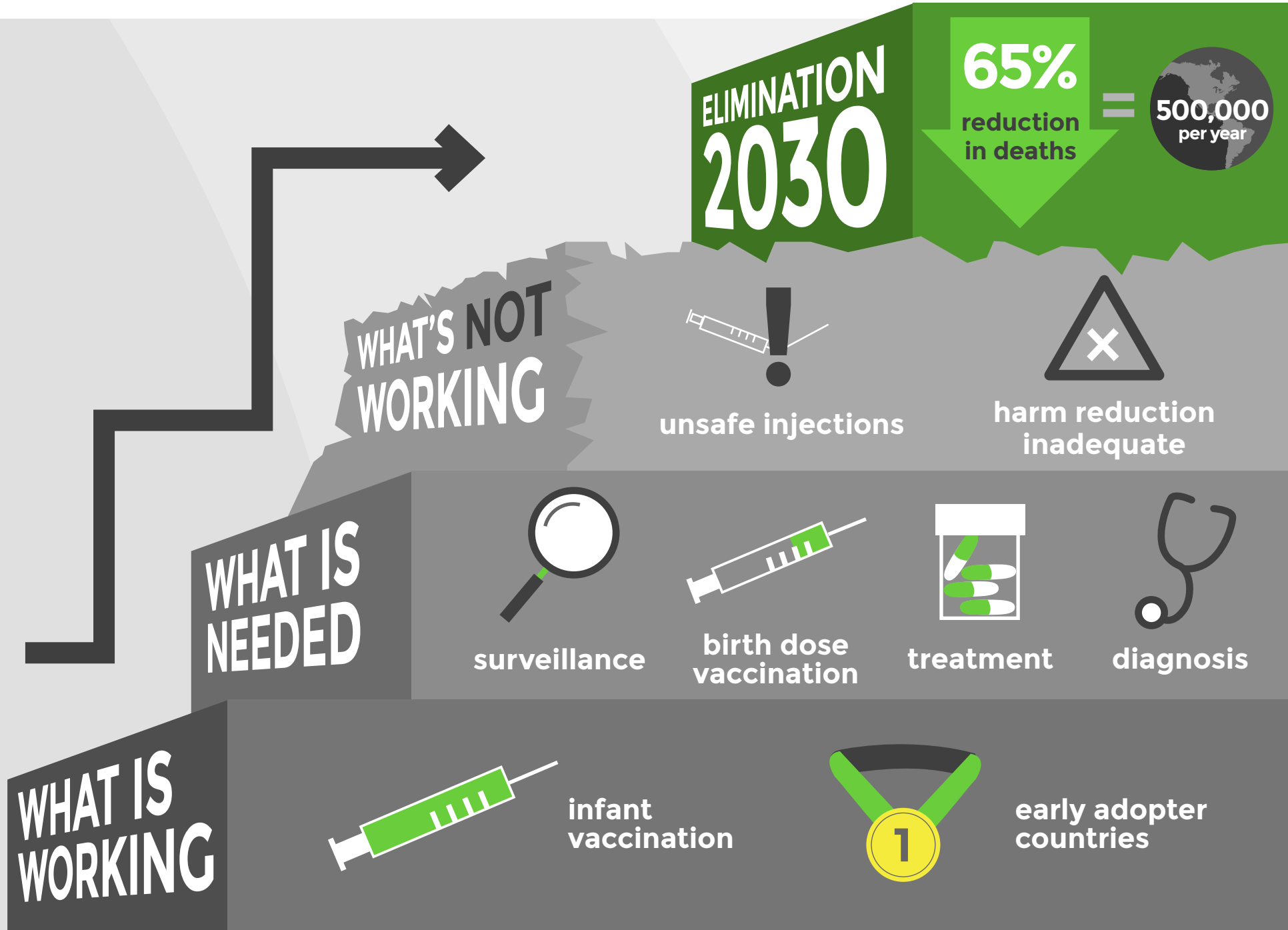
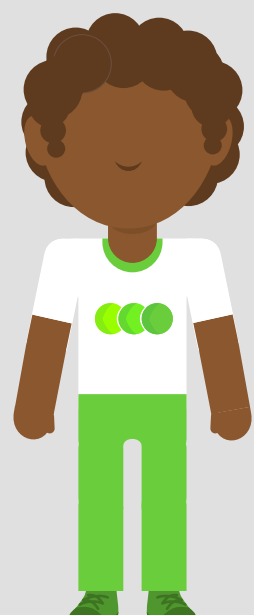




# ELIMINATE HEPATITIS



## HEPATITIS B

**257** MILLION PEOPLE = **3.5%**

## HEPATITIS C

**71** MILLION PEOPLE = **1%**

# 1.34

million deaths per year

0.8% Hep A  
3.3% Hep E  
30% Hep C  
66% Hep B

comparable to



TB

mortality increased by

# 22%

since 2000